

Bottom Mount Dispersers & Emulsifiers

Advanced Mixing Technologies

New

High shear and high flow in a compact sanitary design

Admix expands their comprehensive product line with the introduction of a new in-tank, bottom mount unit. The FlowShear bottom mount disperser & emulsifier offers unrivaled versatility allowing processors to mix a wide range of batch sizes with minimal starting liquid levels.

The FlowShear's unique mixing head design provides high shear and superior flow by combining a rotor-stator with an optional impeller utilizing advanced Jetfoil™ technology. This Ultra sanitary machine provides maximum versatility to meet your most demanding processing needs.

The FlowShear Advantage

- ✓ Low starting liquid level and small batch capability
- ✓ Substantial reduction of air entrainment
- ✓ Reduces the need for secondary agitation
- ✓ Can be combined with scraped surface or counter rotating agitators
- ✓ Optimized for high viscosity personal care, pharmaceutical and food products

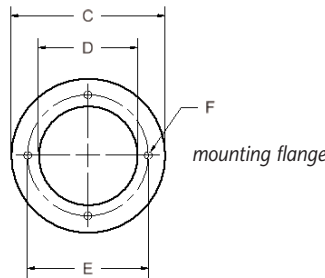
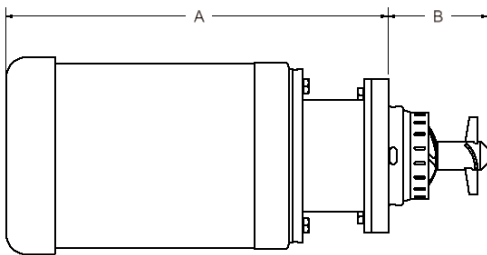


FlowShear Specifications

The FlowShear series of stainless steel mixers is available to suit your specific design and mounting requirements.

Model	Motor HP	60 Hz Speed	Rotor Dia.	Jetfoil™ Dia.	Max Volume alone in vessel		Tip Speed	
					(See Note 1)		(FPS)	(m/ps)
		RPM	(in)	(in)	(Gals)	(liters)		
FS-425	10	3450	4.25"	0	85	322	63.98	19.51
FS-425F	15	3450	4.25"	4"	205	776	63.98	19.51
FS-500	25	3450	5"	0	160	606	75.27	22.95
FS-500F	30	3450	5"	4.7"	365	1381	75.27	22.95
FS-800	30	1750	8"	0	500	1893	61.09	18.63
FS-800F	40	1750	8"	7.5"	1150	4353	61.09	18.63
FS-900	50	1750	9"	0	825	3123	68.72	20.95
FS-900F	75	1750	9"	8.5"	2000	7570	68.72	20.95

Note 1: These charts are only an estimate. Actual product viscosity and other possible agitation in the vessel could increase or decrease maximum batch size.



Model	Dimensions (inches)					
	A*	B	C	D	E	F
FS-425	26	5	9	6	7.25	1/2 (4)
FS-425F	31	6	9	6	7.25	1/2 (4)
FS-500	32	6	11	7	9	1/2 (4)
FS-500F	34	7	11	7	9	1/2 (4)
FS-800	36	8	11	7	9	1/2 (4)
FS-800F	39	10	13	9.5	11	5/8 (4)
FS-900	40	9	13	9.5	11	5/8 (4)
FS-900F	41	12	13	9.5	11	5/8 (4)

*Based on TEFC motors

Why FlowShear?

The FlowShear creates an ideal balance between high shear and high flow by controlling residence time within the work zones, and by generating high tank turnover rates throughout the vessel, reducing or eliminating the need for secondary agitation. This innovative technology reduces batch times within a broad range of thin or viscous products, and allows maximum utilization of vessel geometry.

Our many years of sanitary design expertise is incorporated into the FlowShear for easy cleanability and full compliance with regulatory and cGMP requirements.

Features and benefits

- Allows full shear at volumes as low as 5% of finished tank volume, ideal for low water phases
- Self-draining sanitary seals with our exclusive auto seal shut off to prevent premature seal failure
- Compact mounting flange with sanitary O-ring design
- Designed with minimal protrusion allowing easy addition to scraped surface and counter rotating equipped vessels
- Ideal for low water / gum phase creation
- Total washdown and CIP capability
- Low maintenance design for minimum downtime – no bushings, wear sleeves, shims or bearings to wear out
- Optional impellers and stators to meet specific shear and flow requirement

For more information:

EMPLOYEE OWNED ...
CUSTOMER FOCUSED

